



Martins Road, Bedworth, CV12 0DR

Property Description

BUNGALOW READY TO GO

We are delighted to present this two bedroom, semi-detached bungalow for sale. Situated on Martins Road, Bedworth which is close by to local shops and amenities. Also providing easy access to Bedworth Town and Coventry.

Briefly comprising; entrance hall, lounge, kitchen/dining room, utility, two bedrooms and bathroom. The exterior grants off road parking to the front, side access to the garage and rear garden.

With gas fired central heating and double glazed windows, this home is ready for your furniture! Call us now for more information or to book a viewing. Council Tax Band B & EPC Rating D





Key Features

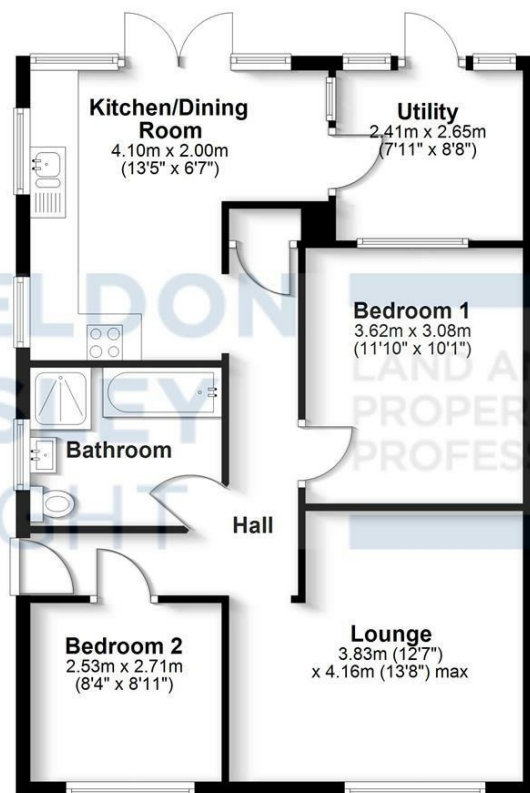
- Semi-Detached Bungalow
- Two Bedrooms
- Recently Rennovated
- Off Road Parking
- Garage
- Close By To Local Amenities
- Great Location
- Council Tax Band B & EPC Rating D

£240,000



Ground Floor

Approx. 69.6 sq. metres (749.1 sq. feet)



Total area: approx. 69.6 sq. metres (749.1 sq. feet)

All efforts have been made to ensure the measurements are accurate on this floor plan, however these are for guidance purposes only.
Plan produced using PlanUp.



EPC Rating - D

Tenure - Freehold

Council Tax Band - B

Local Authority
NBBC



We routinely refer clients to both our recommended legal firm and a panel of financial services providers. It is your decision whether you choose to deal with these companies. In making that decision, you should know that we receive a referral fee.

**SHELDON
BOSLEY
KNIGHT**

LAND AND
PROPERTY
PROFESSIONALS